



## **Title V MCH Block Grant Federal-State Partnership Meeting**

### **MCH Policy Innovation Program (MCH PIP) Information Session**

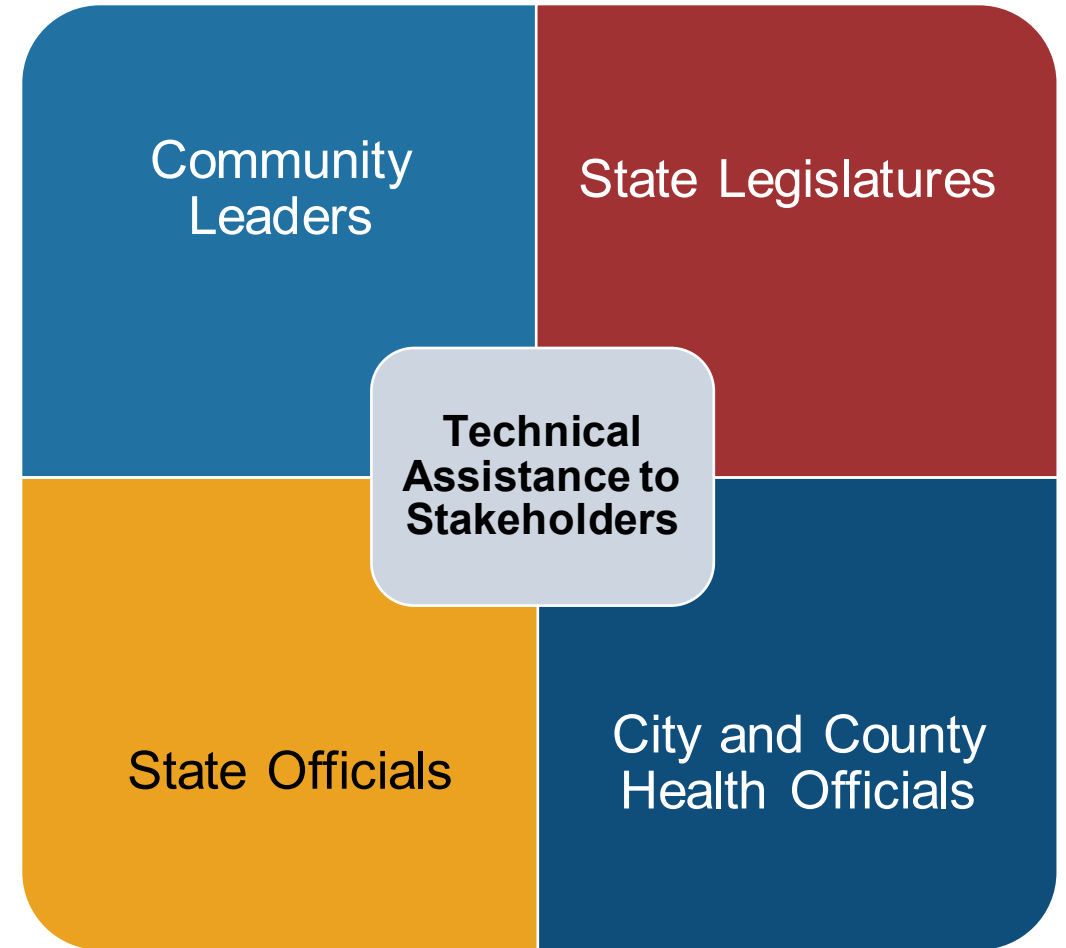
**Maura Dwyer, DrPH, MPH**  
**Project Officer**  
**Maternal and Child Health Bureau (MCHB)**

**Vision: Healthy Communities, Healthy People**



# New: MCH Policy Innovation Program (MCH PIP)

- **Objective:** Implement new city, county, or state policy initiatives to improve MCH outcomes and reduce health disparities
- **Approach:** Convene learning communities to provide technical assistance that supports policy initiatives focused on social determinants of health, MCHB priorities, and emerging MCH issues



# MCH PIP Awardees

---

- Association of Maternal and Child Health Programs (AMCHP)
- National Association of County and City Health Officials (NACCHO)
- National Academy for State Health Policy (NASHP)
- National Conference of State Legislatures (NCSL)
- National Healthy Start Association (NHSA)
- Public Health Law Center

# MCH Policy Innovation Program

- Collaboration
  - with Title V, NOSLO (National Organizations of State and Local Officials) and CMMP
  - Across grantees
  - Coordinate Learning Communities
- Support for emerging issues
- Get to policy change in 3 years
  - Align measures
  - Communicate outcomes

## Social Determinants of Health



Social Determinants of Health  
Copyright-free

Healthy People 2030



Supporting Maternal and Child  
Health Innovation:

**AMCHP's MCH Policy Ideation to  
Action (I2A) Learning  
Collaborative**

# Project Purpose

**Advance Equity:** Create and maintain systems and policies to achieve a nation where all families and communities thrive physically, mentally, and emotionally regardless of their identities or life circumstances.

**Policy Action:** Support the development and implementation of innovative policy initiatives to improve outcomes and reduce health disparities for MCH populations.

# Project Goals

1. **Develop and implement a learning collaborative** to support six cross-sector Title V-led teams in the development of **housing and/or food security** policy initiatives
2. **Develop an MCH Policy Innovation Subject Matter Expert (SME) Council** of federal, national, state, and community-based MCH/SDoH SMEs to leverage and mobilize knowledge, assets, and connections.
3. **Develop and disseminate universal technical assistance** to assist MCH professionals and their partners in effectively using policy approaches to improve SDoH and address emerging issues for MCH populations.

# MCH Policy Ideation to Action (I2A) Learning Collaborative

- Title V programs will apply in February 2025
- 3 Title V teams will be selected for Cohort 1; Each team will be paired with an AMCHP coach
- Title V will invite cross-sector partners to their teams, including a community-based organization (AMCHP will provide a \$10K stipend for their engagement)
- Monthly cohort-wide learning opportunities
- In-person cohort convening and team-based systems mapping workshop
- Facilitated action planning sessions and implementation support
- Access to tailored TA from SMEs as needed

## MCH Policy I2A Learning Collaborative Curriculum



Blue = Facilitated Policy Initiative Stages

Yellow = Learning Collaborative Capacity-Building Elements

# MCH Policy Innovation SME Council

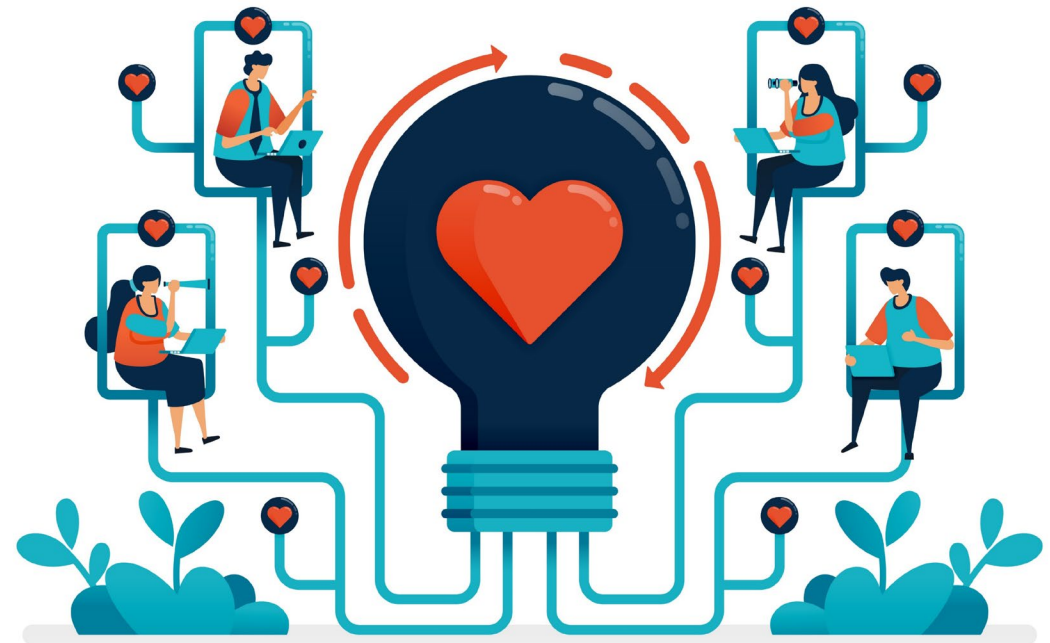
20+ experts from across the nation (including national organizations, Title V representatives, federal agencies, community-based organizations, and people with lived experience) who will:

- Be mobilized to offer both universal and tailored support to the cohort teams as needed
- Utilize their networks to support connections with relevant partners for cohort teams
- Amplify dissemination of project outputs and outcomes
- Support identification of emerging issues throughout the project period

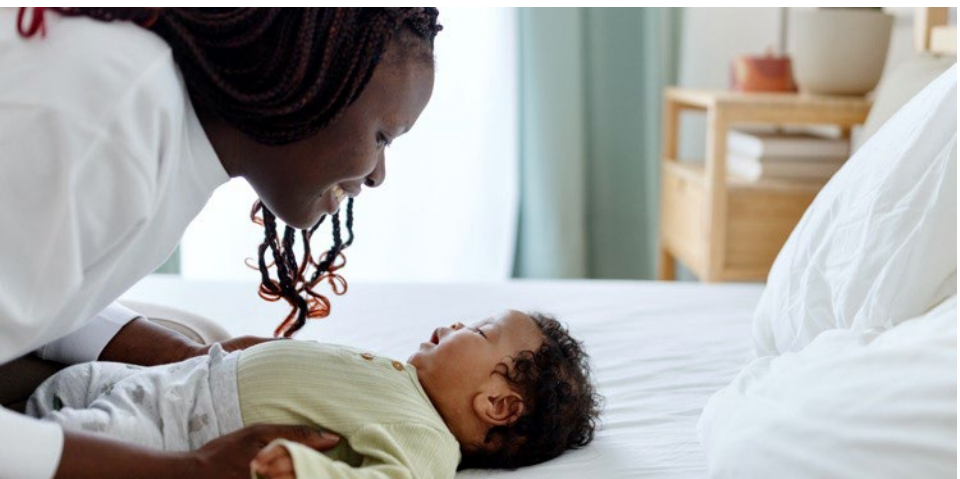


# Submit your SDoH Practice or Policy to AMCHP's MCH Innovations Database

We want to expand the evidence-base on effective SDoH practices/policies for MCH!



<https://amchp.org/innovation-hub/>



**AMCHP**

ASSOCIATION OF MATERNAL & CHILD HEALTH PROGRAMS

# Questions?

Jess Simon ([jssimon@amchp.org](mailto:jssimon@amchp.org))

Anna Corona ([acorona@amchp.org](mailto:acorona@amchp.org))



# Engaging Local Health Officials: Addressing Social Determinants of Health to Improve Maternal and Child Health

## HRSA Maternal and Child Health Policy Innovation Program

Tucker O'Donnell, MPH- Director, MCAH

Matthew Bobo, MPH- Senior Director, MCAH & IZ

# Project Overview and Goals

---

**Primary Stakeholders:** Local Health Officials (LHOs) and their interdisciplinary teams at Local Health Departments

---

**Secondary Stakeholders:** Cross-agency and state-level partners in collaboration with other national organizations.

---

**SDOH Focus:** Housing, transportation, nutrition security, and other MCHB priorities (congenital syphilis, vaccine promotion, and place-based strategies).

## **Establish a Community of Practice for Local Health Officials**

- Conduct Environmental Scan
- Develop and Disseminate TA Materials
- Establish Learning Community

## **Provide individual and group TA to LHDs**

- Getting Further Faster Curriculum
- In-Person Convenings

## **Increase collaboration between HRSA award recipients and other programs**

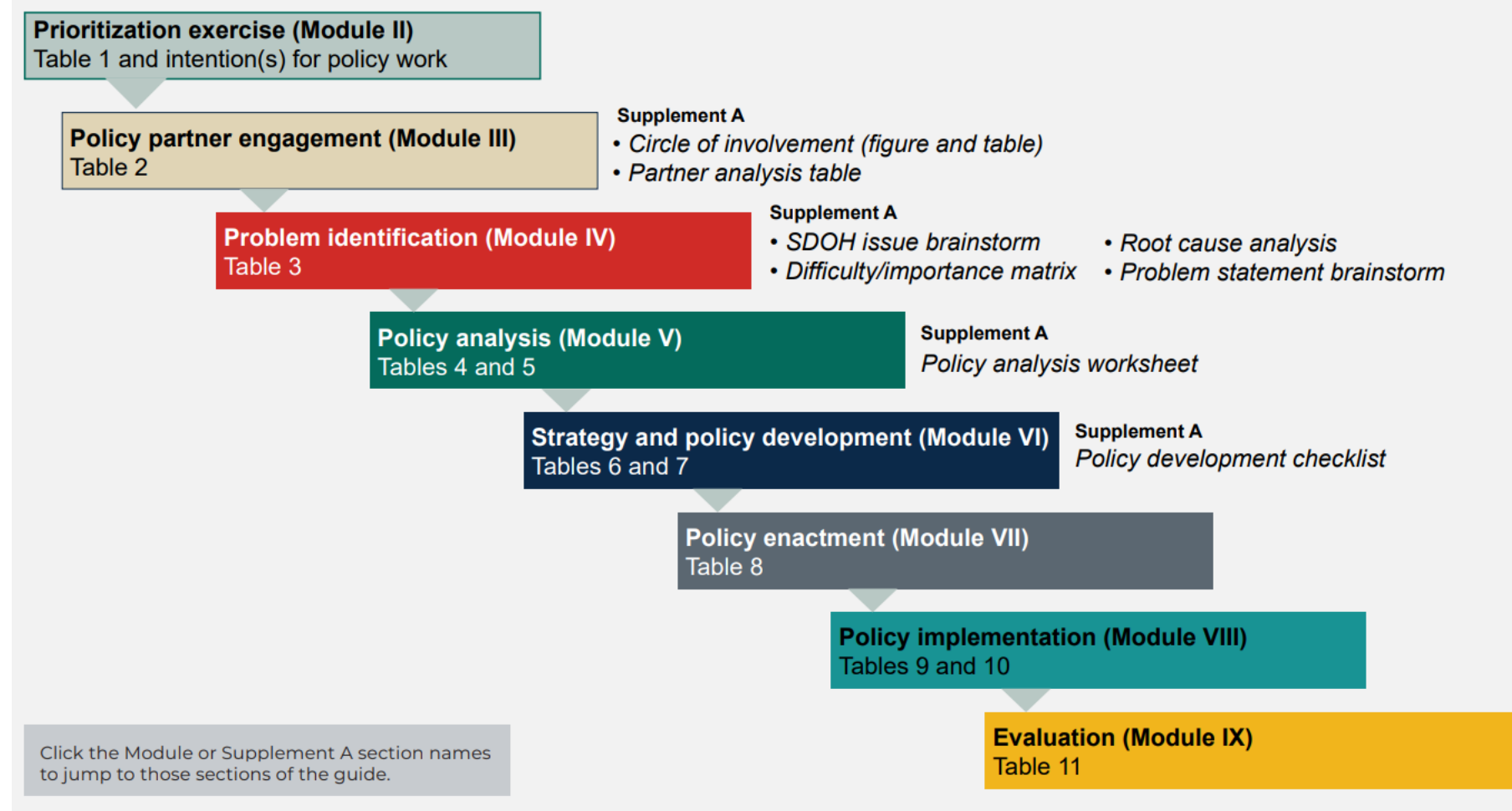
- Establish Advisory Board
- TA focused on PWLE

# Getting Further Faster

## Getting Further Faster Modules



Policy Process Framework



# About NASHP

**The National Academy for State Health Policy (NASHP)** is a nonpartisan organization committed to developing and advancing state health policy innovations and solutions.

NASHP provides a unique forum for the productive exchange of strategies across state government, including the executive and legislative branches.

## **NASHP MCH PIP Staff**

Anna Lipton Galbraith, Director, [algalbraith@nashp.org](mailto:algalbraith@nashp.org)

Dakota Staren, Policy Associate, [dstaren@nashp.org](mailto:dstaren@nashp.org)

Karen VanLandeghem, Senior Director, [kvanlandeghem@nashp.org](mailto:kvanlandeghem@nashp.org)



# Historical NASHP MCH PIP Approach and Focus Areas

## Advancing State-Level Policy Initiatives to Improve MCH Outcomes

- **State priority driven** and informed, and aligned with federal priorities
- Focus on strengthening **partnerships** between Title V, Medicaid, other state officials (e.g., behavioral health) and their key partners (e.g., health plans, providers, CBOs).
- Focus on **achievable cross-sector wins**, results, and impact in states.
- Provide **in-depth state TA** over extended period to assist states in advancing cross-sector MCH innovations.
- Develop **in-depth policy analyses** and resources aligned with state priorities and available to all states.
- Focus on **equitable systems of care** across the work.

## MCH PIP Policy Focus Areas

Child Health & Healthy Development

Maternal Behavioral Health

Perinatal Health Workforce

12-months Medicaid Postpartum Coverage

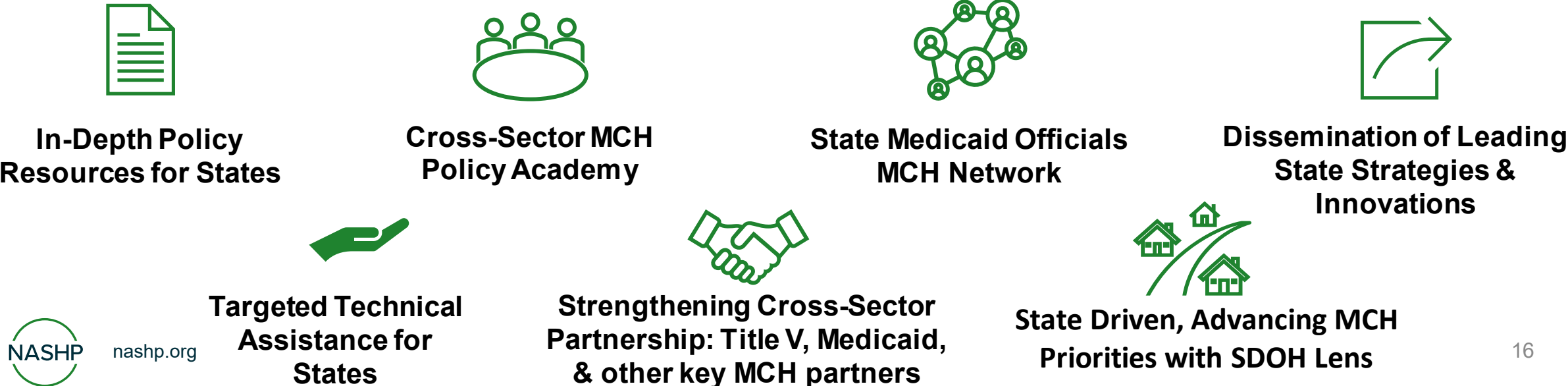
Social Determinants of Health

Strengthening Cross-Sector MCH Partnerships

# NASHP MCH PIP 2024-2027: Approach and Key Activities

Engage state Medicaid, Title V, and other state agencies and their partners (e.g., behavioral health, housing, nutrition programs, health plans) to develop, implement, and sustain state-level policy initiatives and innovations in health and housing, transportation, federal food and nutrition programs, and other related emergent policy areas that improve outcomes and reduce disparities for MCH populations.

## NASHP Approach and Key Activities

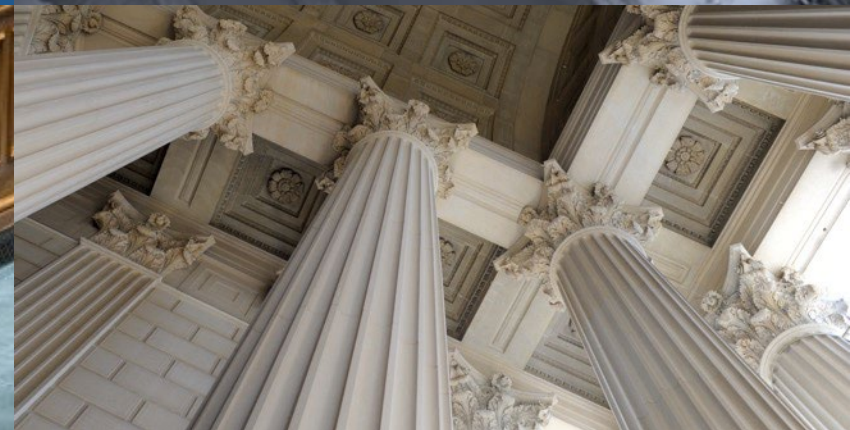






# National Conference of State Legislatures

Kelly Hughes, MPH, RD



# How NCSL Serves State Legislatures

The National Conference of State Legislatures (NCSL) is the **bipartisan** organization serving **legislators and legislative staff** in America's 50 states, D.C. and territories.

With a strong belief in the importance of the legislative institution, NCSL knows **when states are strong, our nation is strong.**



## POLICY RESEARCH

NCSL provides trusted, nonpartisan policy research and analysis

## CONNECTIONS

NCSL links legislators and staff with each other and with experts

## TRAINING

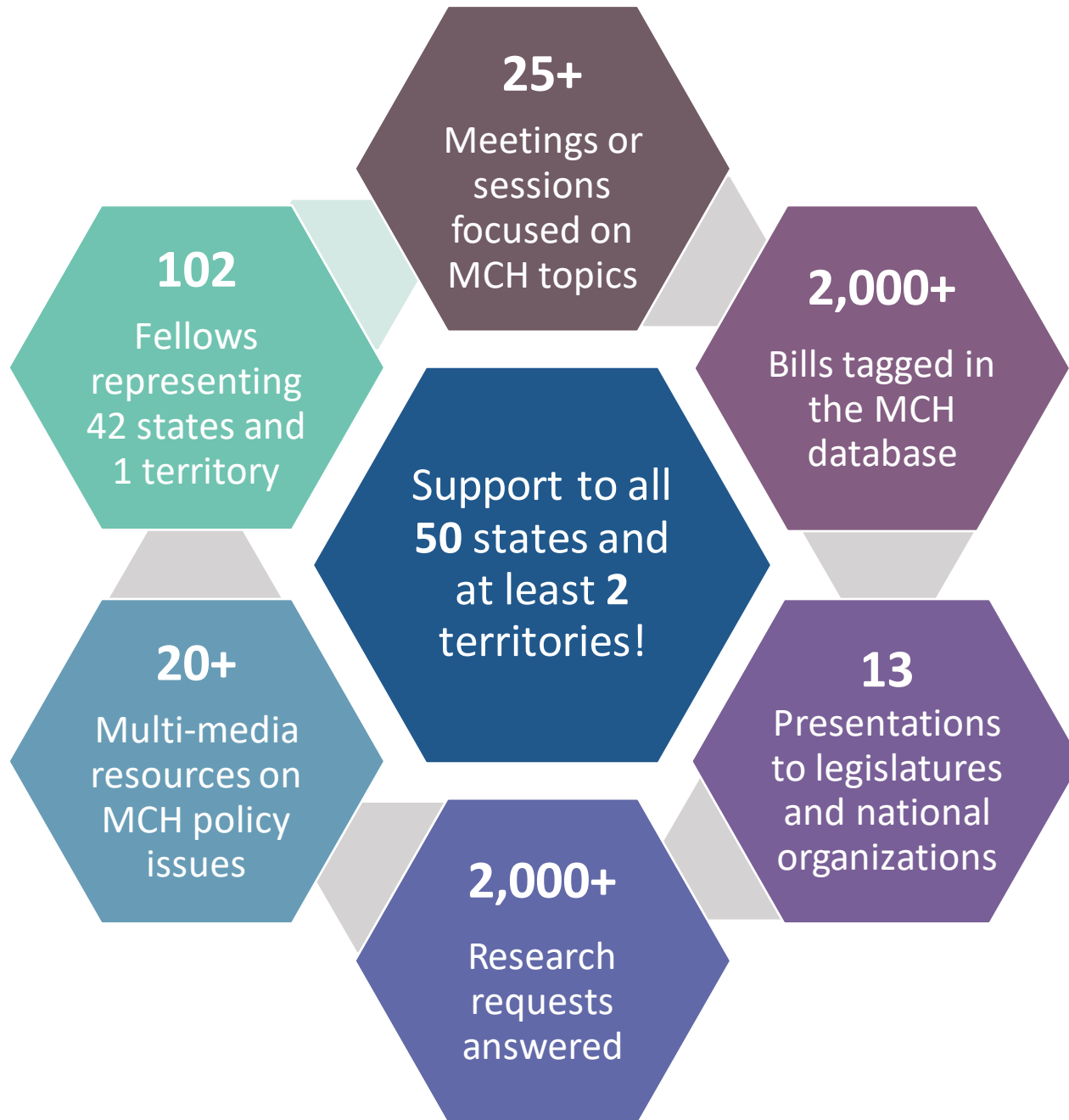
NCSL delivers training tailored specifically for legislators and staff

## STATE VOICE IN D.C.

NCSL represents and advocates on behalf of states on Capitol Hill

## MEETINGS

NCSL meetings facilitate information exchange and policy discussions



## MCH PIP (2018-2024): By The Numbers

# Key Activities for 2024-2027



- **Maternal and Child Health Fellows Program**
  - Year-long for legislators to deepen knowledge and support action planning to improve MCH
  - Target Audience: Up to 20 state legislators nominated by leadership and selected through a competitive application process
  - Focus: Improve MCH outcomes and reduce associated health disparities
  - Activities: Two in-person meetings (March and September 2025) and two webinars
- **Multi-State Policy Collaborative (2027 only)**
  - In-person meeting bringing together 5-6 state teams of up to 30 policy leaders from legislative and executive branches
  - Facilitate information exchange and collaborative identification of challenges and opportunities to improve MCH outcomes and reduce related health disparities
- **Technical Assistance**
  - [Maternal and Child Health Legislative Database](#)
  - Multi-media policy resources
  - Webinars
  - Responses to research requests
  - Presentations to NCSL members and other MCH stakeholders as requested

# NCSL's Maternal and Child Health Team



**Tahra Johnson**

Director



**Kelly Hughes**

Associate Director



**Kathryn  
Costanza**

Program Principal



**Tammy Hill**

Project Manager



**Kendall Speer**

Policy Specialist



**Flora Fouladi**

Policy Associate

# About the National Healthy Start Association (NHSA)

- National membership association for **115** community-driven, community-based Healthy Start (HS) programs in **37 states, DC and Puerto Rico**
- NHSA has a **25-year history** of designing and delivering TA and capacity building support that includes culturally relevant, evidence-based strategies to address community factors and SDOH to improve infant and maternal child health outcomes
- Each HS site operates with a **community consortium of partners, residents and participants**

# Examples of NHSA's Portfolio of Programs Include

## **Alliance for Innovation on Maternal Health Community Care Initiative (AIM CCI)**

Funded by MCHB, AIM CCI focuses specifically on supporting development, design, and testing of community-based maternal safety bundles for application in non-hospital settings, including Maternal Early Warning Signs (MEWS).

## **USDA FAN (Food and Nutrition)**

Funded by the US Department of Agriculture Food and Nutrition Leadership Institute (USDA FAN). This one-year initiative brought together 15 Healthy Start sites, to address food insecurity, when individuals and families lack reliable access to sufficient, affordable, and nutritious food, and build leadership capacity to sustain these efforts.

## **Where Dads Matter Initiative**

Provides resources for men's health and wellness and education for forums for expectant and new dads. Also included is *Texting for Dads*, a program for expectant & new dads, providing monthly tips on pregnancy, postpartum support, men's health and early childhood.

## **The Total Family Care (TFC)**

Operates in seven (7) rural counties in Mississippi. NHSA subcontracts with Tougaloo College Delta Health Partners to provide comprehensive maternal/child health care management services and fatherhood services based on NHSA's care coordination model.

# About National Parent Leadership Institute (NPLI)

- NPLI has partnered with more than 80 communities across the United States, along with one city in Australia.
- NPLI offers programs and services that support and train parents and family members **to become effective leaders and advocates for their children and communities.**
- NPLI also supports and trains decision-makers in how to engage **families as partners in policy development and implementation, facilitate cross-sector collaboration and collective action among diverse partners**, and provide research, evaluation, and technical assistance to enhance the quality and impact of family leadership initiatives.



# Early Milestones

- In partnership with NPLI, developing application for Healthy Start Grantee communities
- Final stages of hiring MCH PIP **Senior Policy Program Manager** who will enhance policy development and capacity building tools and resources with an emphasis on SDOH and improved MCH outcomes
- The MCH PIP Senior Policy Program Manager will also ensure **shared leadership, and authentic community engagement** among selected **Healthy Start Consortium**, including community participants with lived expertise.

# Follow Our Progress

**Subscribe to our  
newsletter**



**Follow us on social media**

LinkedIn, Instagram, Facebook,  
Threads, X, and YouTube



A young girl with long dark hair is shown from the chest up, holding a bunch of red chili peppers. She is looking directly at the camera with a slight smile. The background is a blurred green outdoor setting. A large, semi-transparent red banner is overlaid across the middle of the image, containing the title and author's name in white text.

**NUTRITION SECURITY MATTERS: SUPPORTING STATE  
AND LOCAL POLICYMAKING TO STRENGTHEN  
MATERNAL CHILD HEALTH OUTCOMES**  
**GARIN STROBL**

# PROJECT GOALS

- Build policymaking capacity of state and local health department officials to support maternal child health (MCH) populations, with a focus on improving access to affordable, nutritious, and culturally relevant foods.
- Develop or implement 6 new policy initiatives in 6 new local or state jurisdictions.
- Maternal Child Health Bureau (MCHB) priority topics and emerging MCH issues.

# ADDRESSING PRIORITY ISSUES AND UNMET NEEDS

- Inadequate access to nutritious food during pregnancy is linked to several negative health conditions for the mother and baby.
- American Indian and Alaska Native, Black and Hispanic households experience nearly double the rates of food insecurity compared to white non-Hispanic households, and single-mother household have some of the highest rates.
- Programs like WIC and SNAP are vital in addressing nutrition insecurity, but these programs have gaps.

# PROJECT PLAN

- Year One: Launch learning community (LC) and begin policy initiative development; establish MCH stakeholder network; and create 8 legal technical assistance (LTA) resources.
- Year Two: Strengthen LC member and MCH stakeholder capacity; continue work on policy initiative development and implementation; develop more LTA resources.
- Year Three: Continue to support LC members in implementing policy initiatives; collaborate on sustainability planning; more LTA resources; celebrate successes.

# For More Information

---

MCH Policy Innovation Program

[Maternal and Child Health Policy Innovation Program \(MCH PIP\)](#)  
[MCHB \(hrsa.gov\)](#)

Learn more at <https://mchb.hrsa.gov>



A young girl with long dark hair is holding a bunch of red chili peppers. She is looking directly at the camera with a slight smile. The background is a blurred green outdoor setting. A large red diagonal banner is overlaid on the image, containing the title and author information.

**NUTRITION SECURITY MATTERS: SUPPORTING STATE  
AND LOCAL POLICYMAKING TO STRENGTHEN  
MATERNAL CHILD HEALTH OUTCOMES**  
**GARIN STROBL**



# PROJECT GOALS

- Build policymaking capacity of state and local health department officials to support maternal child health (MCH) populations, with a focus on improving access to affordable, nutritious, and culturally relevant foods.
- Develop or implement 6 new policy initiatives in 6 new local or state jurisdictions.
- Maternal Child Health Bureau (MCHB) priority topics and emerging MCH issues.

# ADDRESSING PRIORITY ISSUES AND UNMET NEEDS

- Inadequate access to nutritious food during pregnancy is linked to several negative health conditions for the mother and baby.
- American Indian and Alaska Native, Black and Hispanic households experience nearly double the rates of food insecurity compared to white non-Hispanic households, and single-mother household have some of the highest rates.
- Programs like WIC and SNAP are vital in addressing nutrition insecurity, but these programs have gaps.

# PROJECT PLAN

- Year One: Launch learning community (LC) and begin policy initiative development; establish MCH stakeholder network; and create 8 legal technical assistance (LTA) resources.
- Year Two: Strengthen LC member and MCH stakeholder capacity; continue work on policy initiative development and implementation; develop more LTA resources.
- Year Three: Continue to support LC members in implementing policy initiatives; collaborate on sustainability planning; more LTA resources; celebrate successes.