

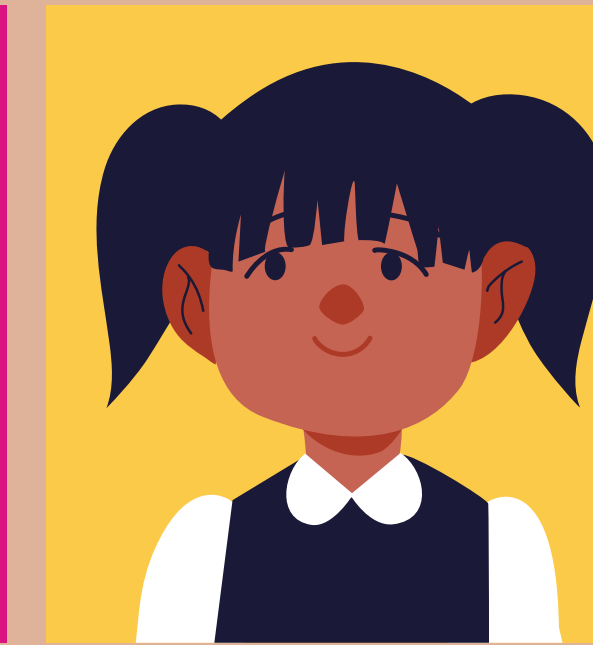
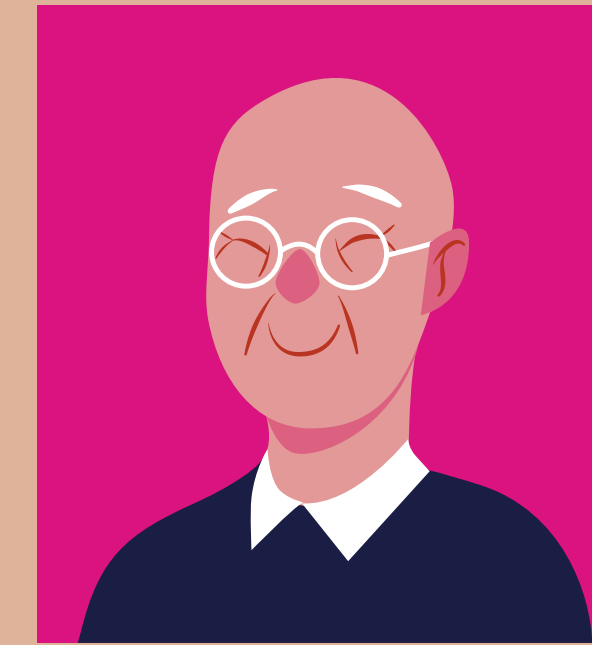
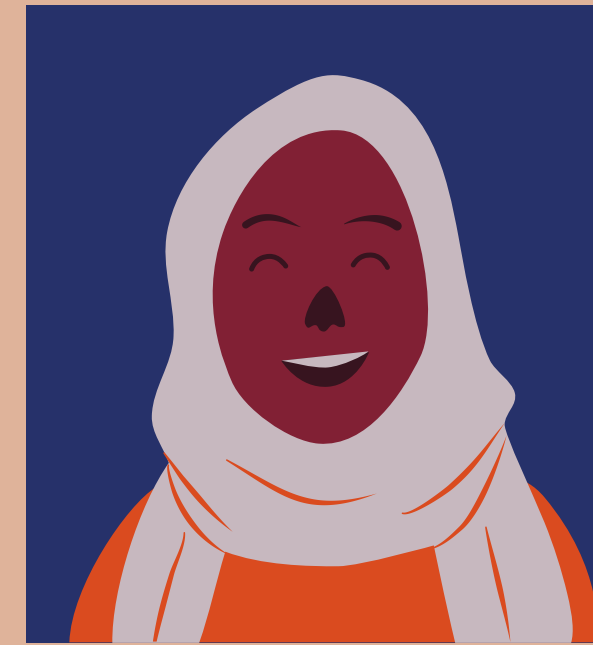
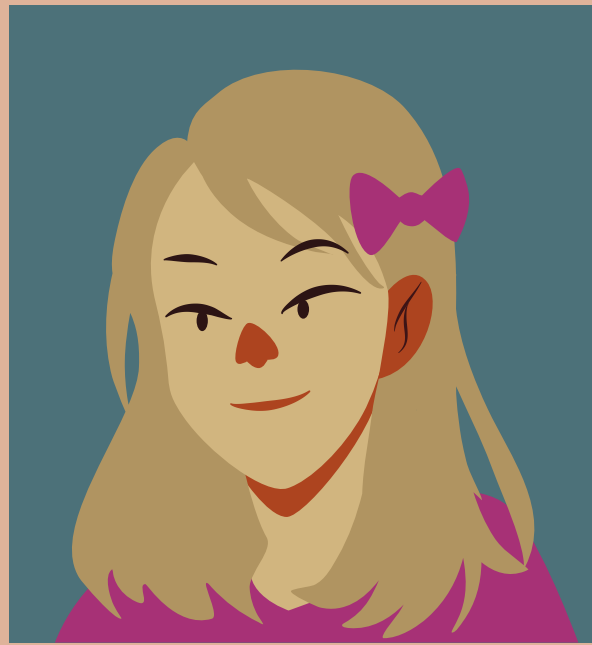
# Hello Healthy Beginnings!

comment in the chat or share:

**Name one thing that you often do for others, but not enough for yourself?**

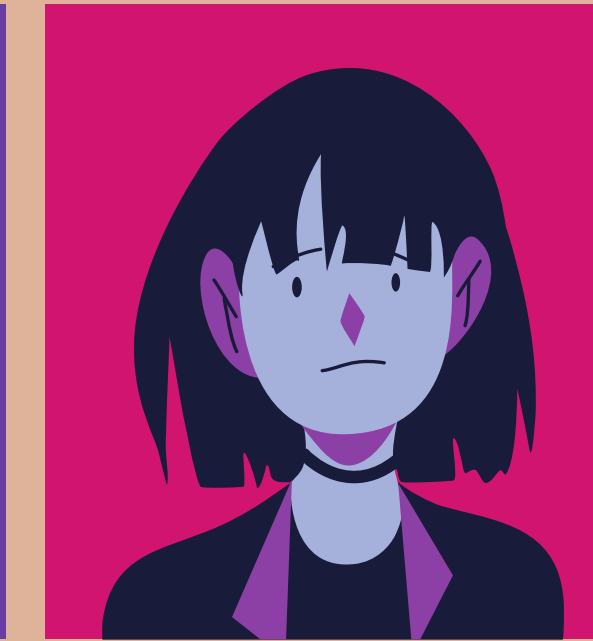
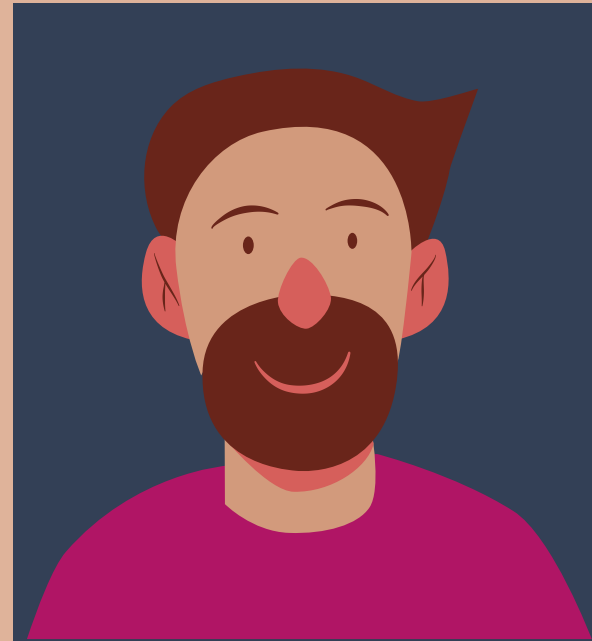
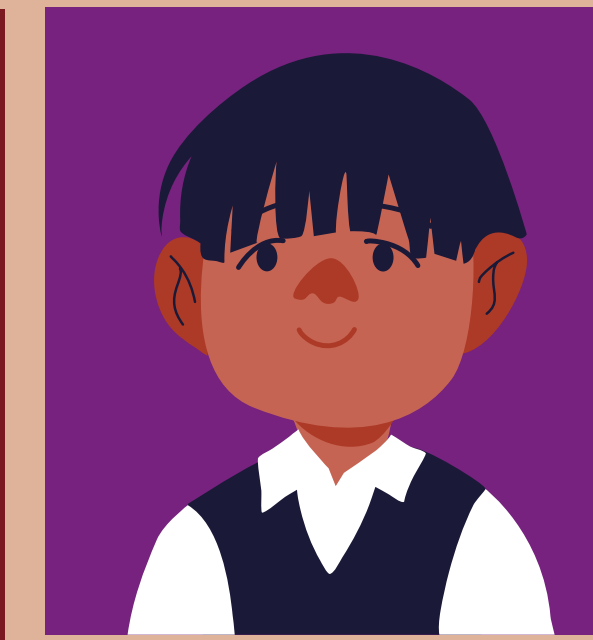
**OR**

**How do you self care?**



A Conversation on

# Harm Reducing Language



# Objectives

**Understand  
harm  
reducing  
language**

**Identify issues  
within  
conventional  
public health  
language**

**Practice  
reframing  
language**





What is harm  
reducing  
language?

## Avoids

# Stigmatization

Avoids language that stigmatizes individuals for the conditions that they experience as a result of systemic imbalances of power.

# Accountability

Directs attention to root causes of inequity. Redirects blame from persons affected to acknowledging the perpetual harm caused by systems and structures that hold power and privilege.



Environmental Scan 2021

# High/At-Risk

Common and frequently used  
term found within Title V  
annual report(s)





# Conventional Public Health Terms

**Risky Behavior**

**Vulnerable Populations**

**Risk Factors**

**Social Problem**

**Intervention**





Terms within  
**Health Equity Lens**

**Dangerous Conditions**

**Populations oppressed or under threat by...**

**Racism/Social Injustice**

**Social Change**



# External Guidance



## Table of contents

|   |       |
|---|-------|
| Principles  | 4-7   |
| Race and ethnicity                                      | 8-13  |
| Immigration status and language proficiency             | 14-15 |
| Sex, gender, gender identity and sexual orientation     | 16-21 |
| Ability (physical, mental and chronological attributes) | 22-25 |
| Glossary of terms and definitions                       | 26-29 |
| Appendix  | 30-31 |

## OHSU Inclusive Language Guide:

### Principles

1. Identity is personal
2. Respect
3. Be Specific
4. Be Thoughtful & Intentional



## Summary & Implementation Guidance Handout Glossary: Describing Key Terms/Principles

| Avoid using terms such as...  | Why?  | Instead use...   |
|---|---|--|
| Vulnerable groups, Marginalized groups, High-risk groups, At-risk groups, High-burden groups, Hard to reach groups, Targeted population | These terms can be stigmatizing. These terms are vague and imply that the condition is inherent to the group rather than the actual causal factors.   | <ul style="list-style-type: none"> <li>Disproportionately affected</li> <li>Groups that have been economically/socially marginalized</li> <li>Groups that have been marginalized</li> <li>Groups placed at higher risk/put at higher risk of [outcome]</li> <li>Groups at higher risk of [outcome]</li> <li>Groups experiencing disadvantage</li> <li>Groups experiencing disproportionate impact</li> <li>Population of focus</li> <li>Under-resourced communities</li> </ul> |
| Examples: Diabetics, Diabetes patients, The diabetes population, COVID-19 cases, The homeless, Inmates, Victims                         | Avoid using dehumanizing language and use first-person language instead. Describe people as having a condition or circumstance, not being a condition.  | <ul style="list-style-type: none"> <li>People with [disease]</li> <li>Patients with [disease] (if being treated)</li> <li>People experiencing [health outcome or life circumstance]</li> <li>People who are experiencing [condition]</li> <li>Survivors</li> </ul>   |
| Tackle a community's health issue, Target communities for interventions, Stakeholder/Stakeholder engagement <sup>1</sup>                | Avoid saying target, tackle, combat, or other terms with violent connotation when referring to people, groups, or communities. Avoid using stakeholder to mean partner.<br><br><u>Note:</u> "Stakeholder" has a particularly violent connotation for tribes and urban Indian organizations. | <ul style="list-style-type: none"> <li>Engage</li> <li>Prioritize</li> <li>Consider the needs of/Tailor to the needs of</li> <li>Population of focus</li> <li>Stakeholders are persons who may be affected by a course of action. Preferred terms include community members and persons affected by [policy/program/practice], partners, collaborators, allies, community engagement, tribal engagement, urban Indian conferment (See OTASA for more information).</li> </ul>  |

SOURCE: [Centers for Disease Control and Prevention Health Equity Style Guide, 2020](#)

<sup>1</sup> The Evidence and Implementation team is in the process of removing this language for the Innovation Hub Fall 2021 Review.

# Internal Guidance

## Environmental Scan

| <b>Terms to Avoid</b>              | <b>Why?</b>   | <b>Alternative Language</b>                          |
|------------------------------------|---|--|
| <b>Vulnerable Populations</b>      | <b>Vulnerable to what?<br/>Who/what is the reason for "vulnerability"?</b>                          | <b>Populations oppressed/under threat by...</b>      |
| <b>High Risk</b>                   | <b>Individuals are not inherently 'at risk' or 'high risk' because of their demographic status.</b> | <b>Populations disproportionately affected by...</b> |
| <b>Underserved /Underresourced</b> | <b>Individuals are not responsible for limited access to care.</b>                                  | <b>People who are medically underserved.</b>         |



# Title V Example

**Despite program successes, -----  
continued to be impacted by extreme  
amounts of violence in FY19 affecting  
participation levels. With Title V support, --  
--- plans to expand their workforce  
development programs to target more  
vulnerable young fathers in an effort to  
reduce both recidivism and community  
violence.**





# What language sticks out to you?

Despite program successes, -----  
continued to be impacted by extreme  
amounts of violence in FY19 affecting  
participation levels. With Title V support, --  
--- plans to expand their workforce  
development programs to target more  
vulnerable young fathers in an effort to  
reduce both recidivism and community  
violence.





## Let's Reframe!

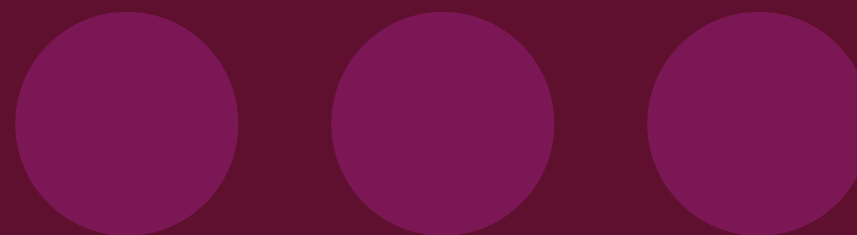
Despite the successes, the program faces extensive challenges recruiting and keeping membership due to resource and capacity limitations to keep participants protected and safely engaged. Participants face discrimination within the workplace and limited economic opportunities that perpetuate dangerous conditions resulting in preventable violent acts against them. We must implement our plans to expand workforce development programs to help young fathers within the community.

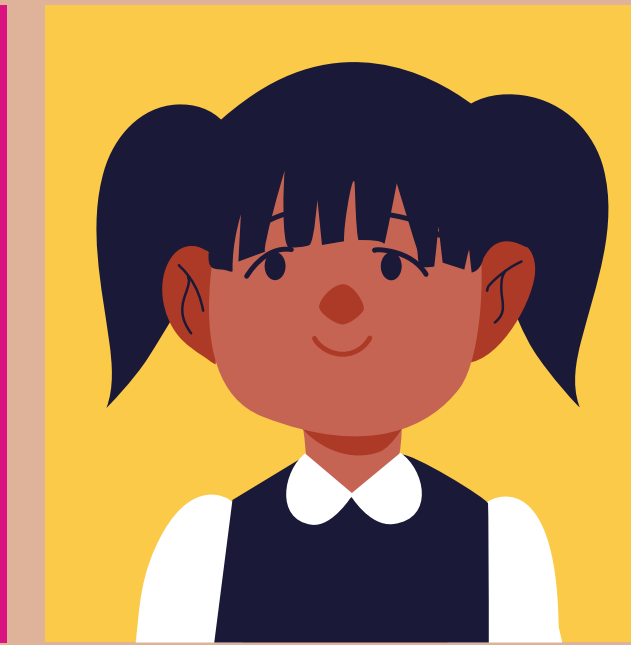
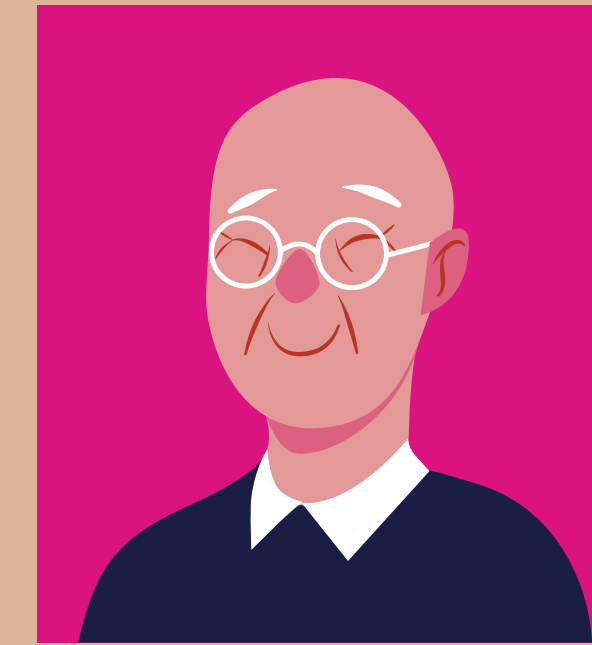
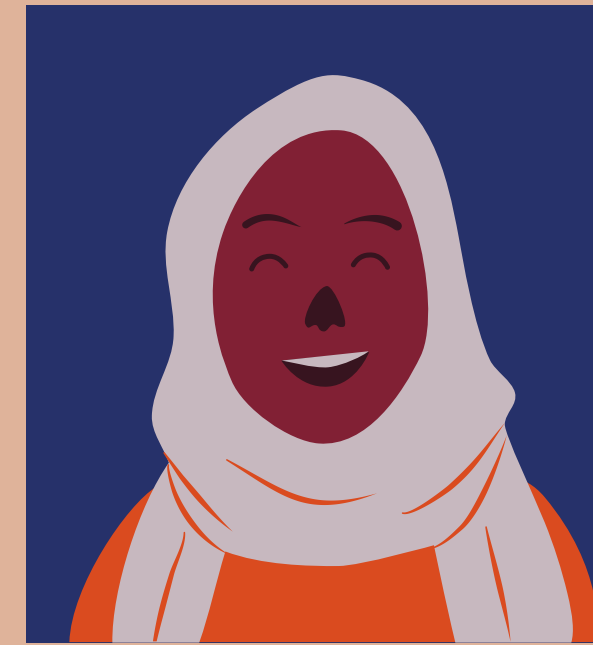
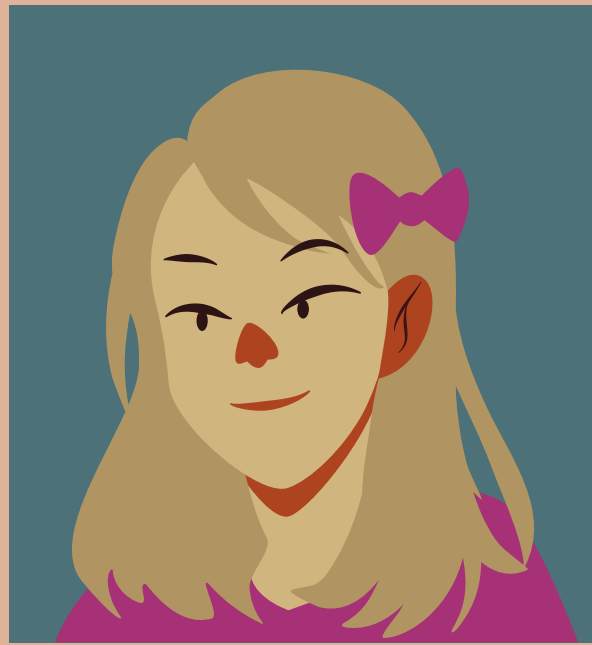




# Suggestions for Reframing: Social Justice-Based Public Health Narrative

- **CONSIDER HISTORY AND ROLE OF PUBLIC HEALTH**
- **IDENTIFY WHAT'S AT STAKE. NAME THE THREATS AND THE SOURCE**
- **ENSURE THAT RESIDENTS TELL THEIR OWN STORIES**
- **CHALLENGE DOMINANT PUBLIC NARRATIVES AND HIGHLIGHT ROOT CAUSES**

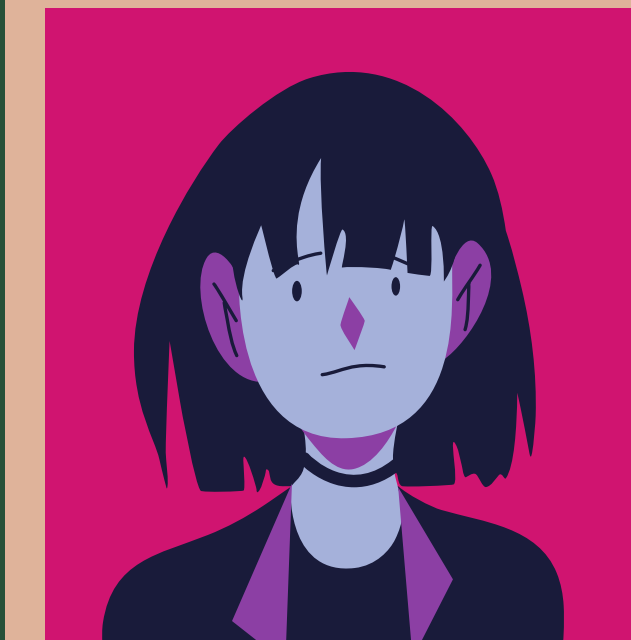




**Sources:**

Advancing Public Narrative for Health Equity  
& Social Justice, Richard Hofrichter, PhD  
(2019)

Summary & Implementation Guidance Handout  
Glossary, Innovation Hub, AMCHP (2021)



# Additional Sources

(In your google folders)

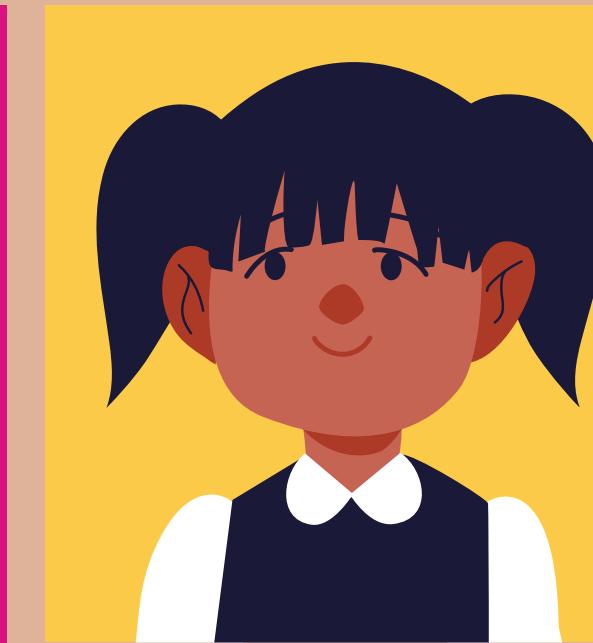
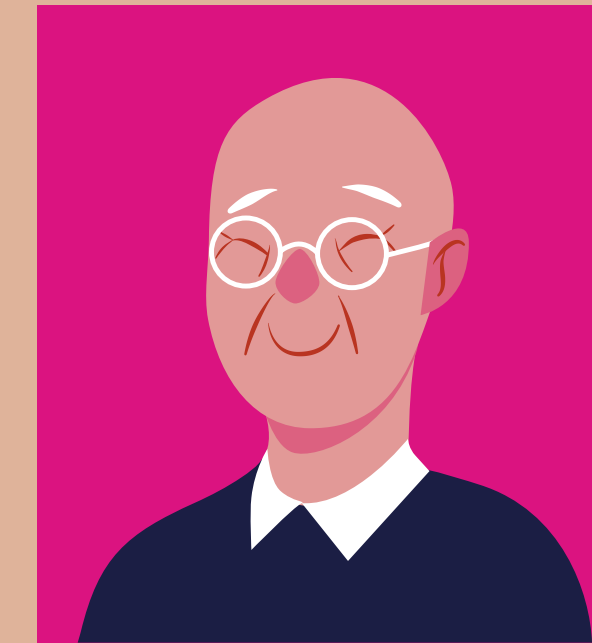
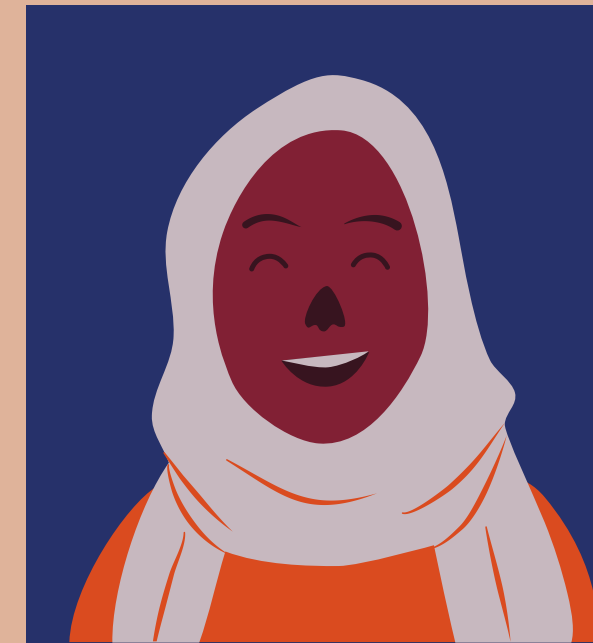
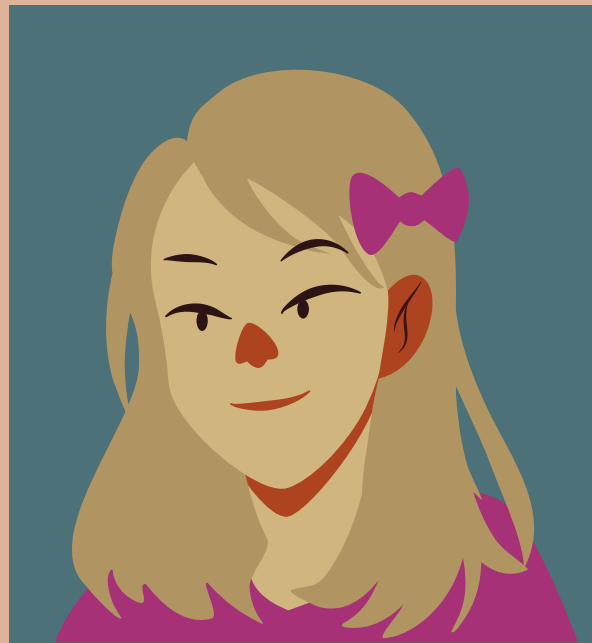
CDC Health Communication, Health Equity Lens:

[https://www.cdc.gov/healthcommunication/Health\\_Equity\\_Lens.html](https://www.cdc.gov/healthcommunication/Health_Equity_Lens.html)

Oregon Health & Science University Inclusive Language Guide

[https://www.ohsu.edu/sites/default/files/2021-03/OHSU%20Inclusive%20Language%20Guide\\_031521.pdf](https://www.ohsu.edu/sites/default/files/2021-03/OHSU%20Inclusive%20Language%20Guide_031521.pdf)





*Thank you!*

